

Towel Folder for bath towels, hand towels and bath mats

TMF-3

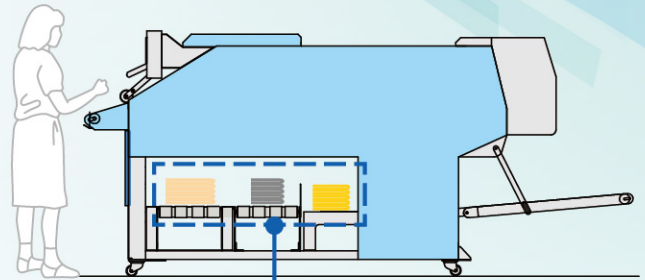
For combined use

& Space Saving



No need for sorting in the wagon

"Avoid bath mats", "Change the modes depending on the items" are not required. Operators can feed any items directly into the machine.



1 3 types of towels are automatically recognized.

Random feeding of bath towels, hand towels and bath mats being possible, the need for pre-wash sorting and wagon sorting are eliminated. And, stacking each type is automatically made and discharge to the respective conveyors of bath towels, hand towels and bath mats is also automatically made.

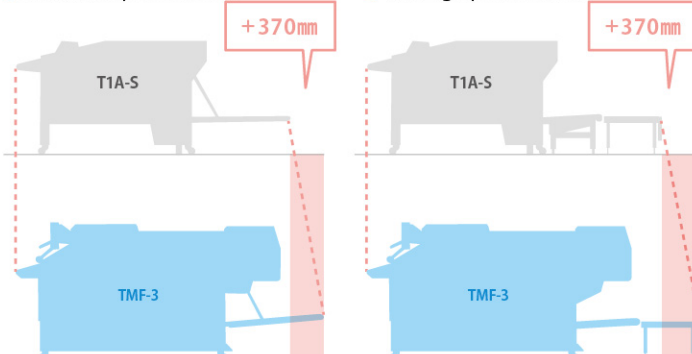
Condition of sorting Item texture / width / length ※ In case that thickness of hand towels and bath mats is similar each other, automatic recognition may not work and manual sorting works will be required.

2 Space Saving

Compared to our best seller Towel Folder, T1A-S, TMF-3 can be installed at only 370mm larger area.

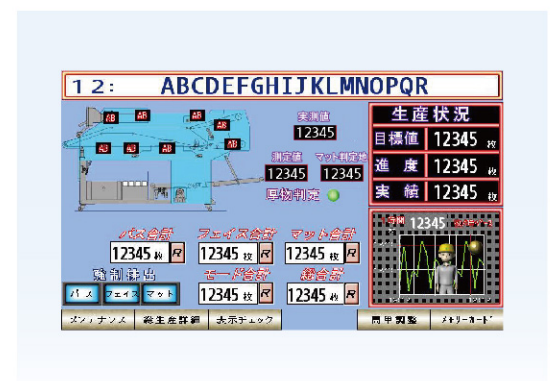
● Standard Specifications

● Picking Specifications



3 Touch Screen for easy operations

Equipped with Touch Screen with high visibility and operability.



TMF-3

For combined use & Space Saving

Options

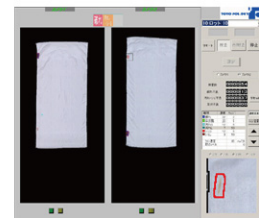
● Production Control System (PPT)

Production progress at site is displayed in real time. A variety of production monitoring functions allow for display that corresponds to each production line.

● Others Picking Specifications, Vacuum unit (VF)

● Towel Inspection Device

At Picking specifications machine, rejected item conveyor is installed at the rear of the machine and "Dirt" and "Tear" are sorted and discharged.

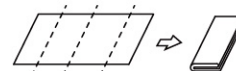


Specifications

Target items

● Bath Towel, Hand Towel Stacked up to 20 pcs

- Bath Towel 1/4 fold
Max. W900×L1,800mm
- Hand Towel 1/4 fold
Max. W500×L1,500mm

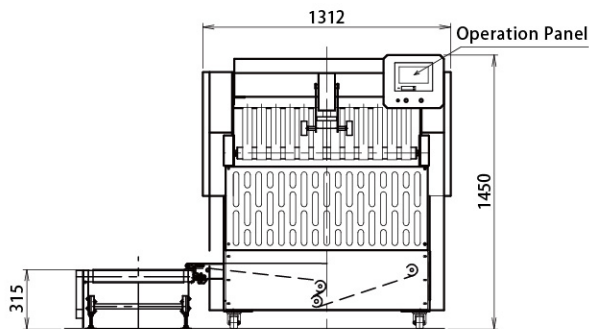
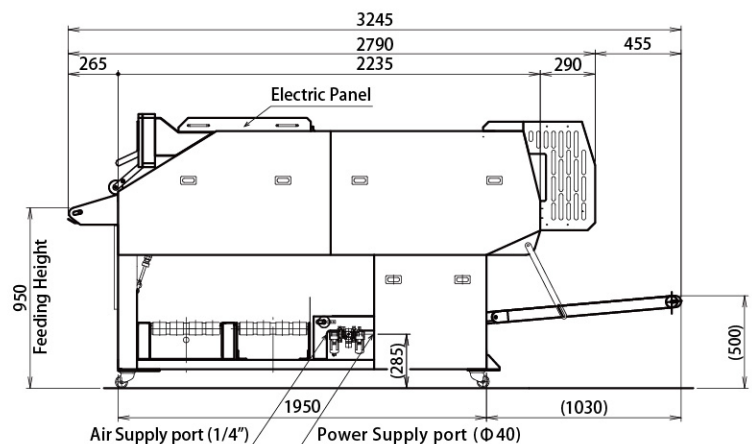
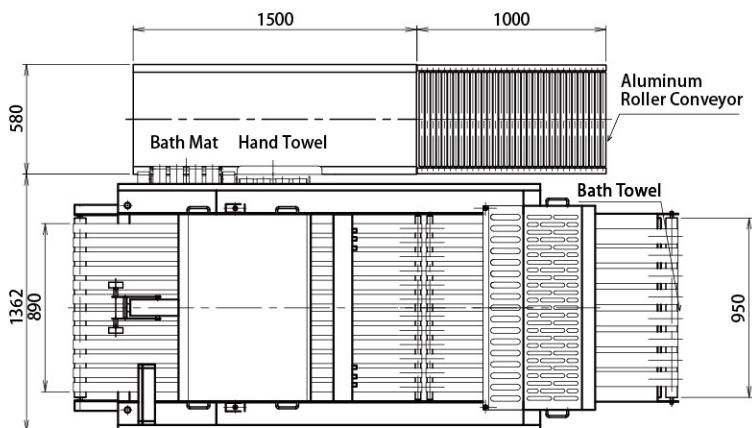


● Bath Mat Stacked up to 20 pcs

- 1/2 fold
Max. W500×L1,000mm
- 1/3 fold
Max. W500×L1,200mm
- 1/4 fold
Max. W500×L1,800mm



※Random feeding is not performed if hand towels and bath mats are similarly thick and long.
 ※For differentiation of bath mat folding patterns, individual each folding mode setting is necessary. ※ Depending on thickness, materials or others of items, processing may not be appropriate.



※For better performances, specifications such as dimensions, shapes are subject to change without notices.

型式		TMF-3	電源	3Ph AC200V
機械寸法	幅	1,942mm	電源容量	1.47kW
	奥行	3,245mm	空気圧力	0.5MPa
	高さ	1,450mm	空気消費量	100NL/min
			重量	Appr. 1,500kg



Toto Folder Manufacturing Co., Ltd. <https://www.totofolder.jp/>

Head Office:
 32-24 Maegami-cho, Kawaguchi-shi, Saitama-ken 333-0843 Japan
 Phone: +81-(0)48-262-2838

Kawagoe Plant:
 2-8-75 Yoshinodai, Kawagoe-shi, Saitama-ken 350-0833 Japan
 Phone: +81-(0)49-225-6125