

VMS-GL-700S/700M

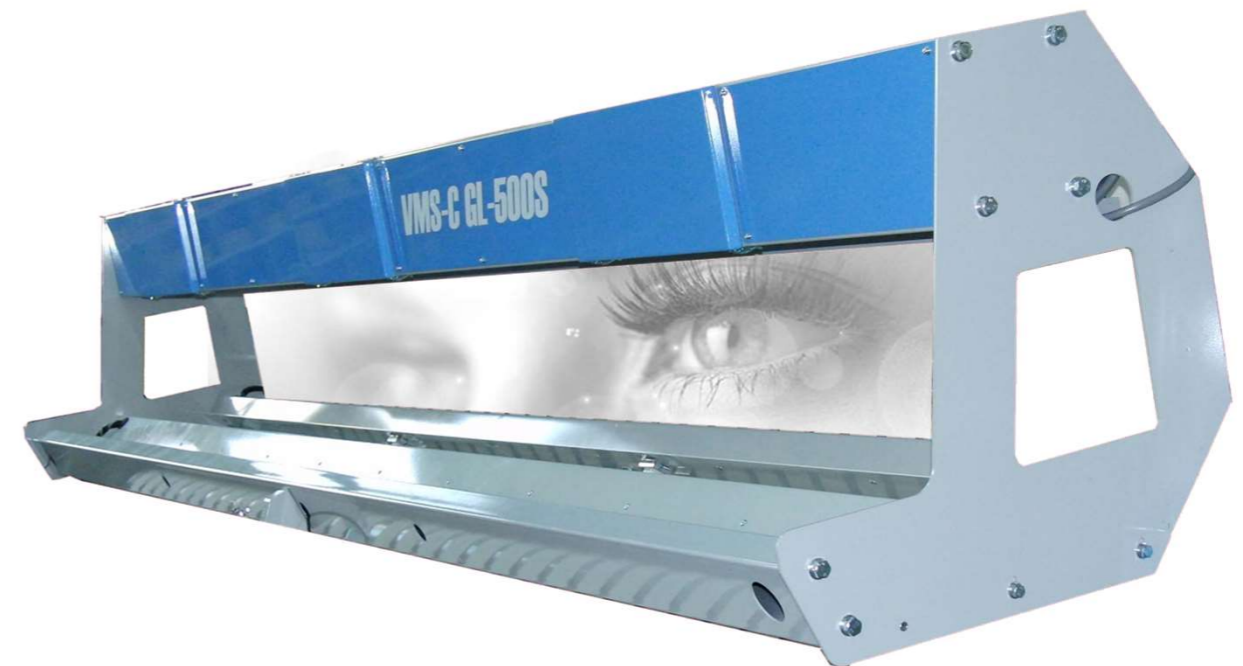
Patent applied

The Highest functionality & performance and more condensed & compact

Automatic Video for Linen Quality Control Inspection Device

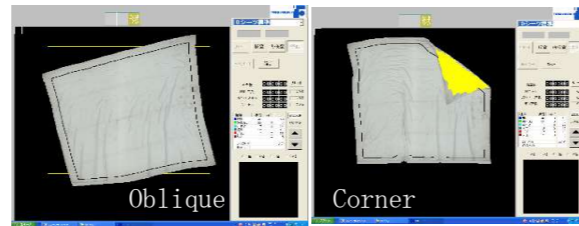
VMS-GL-700S/700M

3 eyes to sense the targets more closely and clearly



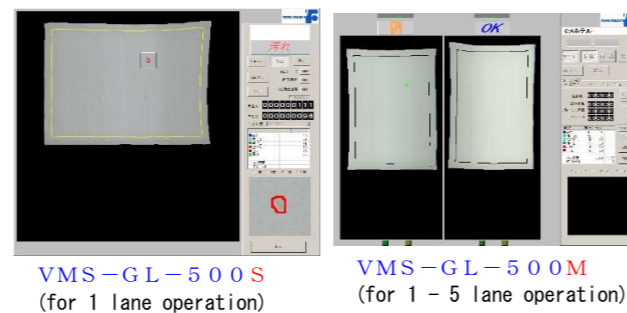
Advantages and Specifications

- ◆ **Detects sheet deformation**
Shape deformation (oblique, corner bending, etc.) are detected and rejected at the folder
- ◆ **Linkage operation with the Feeder**
Operation modes could be changed from SONIC series Feeder. (except SONIC-A, SONIC-FII)
- ◆ **Automatic Correction**
The light amount varies according to the temperature. Strictly speaking, the light amounts in the morning and in the day are different each other. VMS-GL-500S/500M automatically detects light amount fluctuation and automatically corrects.
- ◆ **Reduces malfunctions caused by wrinkles**
"Wrinkle Mitigation Logic" is equipped to reduce the possibility of malfunctions caused by wrinkles.
- ◆ **Mold Detection Function is enhanced**
Original Logic dedicated to detect mold is added. Mold Detection Function is improved.
- ◆ **Various Alarms**
Low light level will be alarmed to notify when to replace fluorescent lamps. And other machine errors will be displayed on the screen.
- ◆ **Easy function updates**
Since image processing is performed on PC, it can be easily upgraded when new functions are added in the future. (Option)



Basic Specifications

Work Width	Maximum 3500mm
Work Length	Maximum 3500mm
Accuracy	Minimum 2mm square
Number of lane	VMS-GL-700S: 1 Lane VMS-GL-700M: 1- 5 Lane
Conveyer Speed	10 - 70m/min.
Power Supply	AC200V, 2.0kW
Display/Operation	17" Color Touch Panel
Non-Inspection area	Front and Back, Left and Right variable in 1 cm units
Automatic correction	To follow light amount fluctuation
Image Storage	Auto storage of the latest 5 images
Repeat inspection	Possible by using storage function
Type Registration	Maximum 32 types
Alarm output	Lower light amount, machine error, etc.



This device is to inspect the linen products such as bed sheets for dirt and tears during the "Drying, Ironing, Folding" process in Linen Supply Industry. The device inspects the products (target) in expanded condition between the ironer and the folder. Bed sheets that are defective during inspection are automatically ejected by folder.

※Specifications and dimensions are subject to change without notice to improve performance.

TOTOFOLDER MANUFACTURING CO., LTD.

32-24 Maegami, Kawauchi-shi, Saitama-ken
Phone: +81 (0)48-262-2838 Fax: +81 (0)48-262-2788

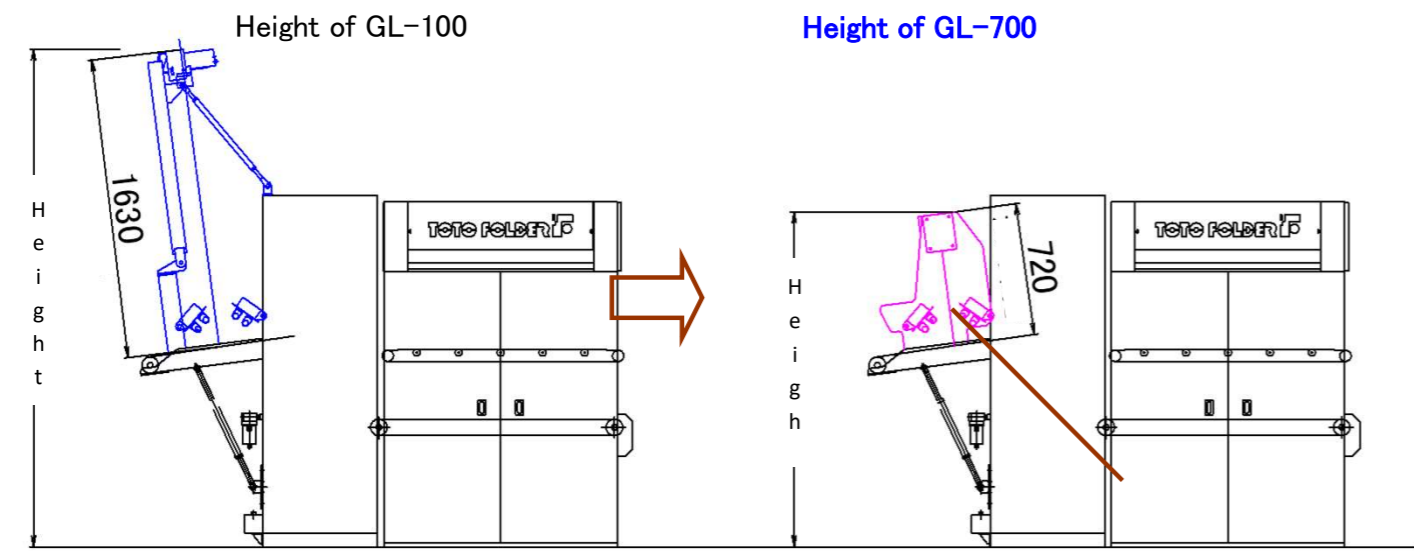
Distributor

TOTOFOLDER MANUFACTURING

Automatic Video for Linen Quality Control Inspection Device **VMS-GL-700S/700M**

Keeping the dependable and excellent but more compact

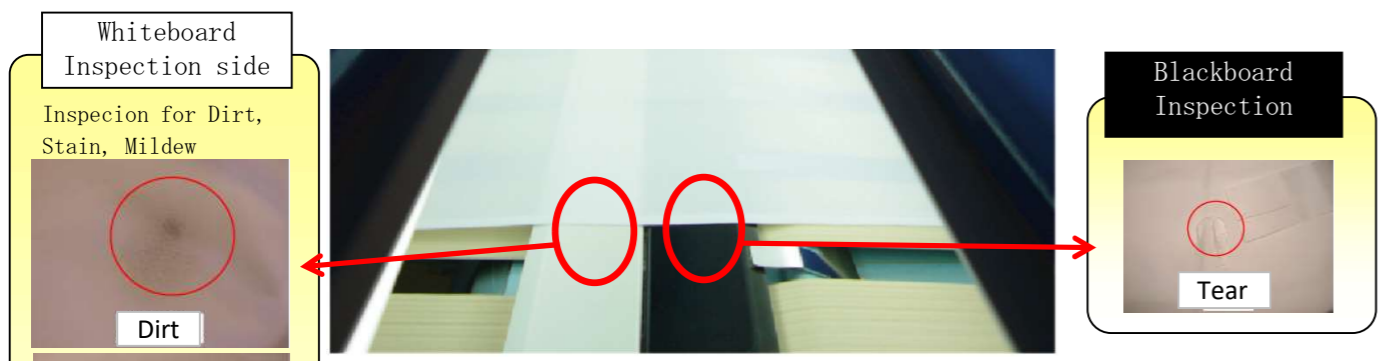
Keeping high inspection accuracy of the conventional model, GL-100 series, the distance between camera and the targets is reduced to less than half (apprx. 700mm). This model could be, therefore, installed at the lines where installation of inspection device was once given up due to restrictions of installation height.



※Comparison when attaching to Sheet Folder SS1H-

Black and White backgrounded Inspection

In the VMS-GL-700 series, inspection is performed on both blackboard and whiteboard. "Stain", "mildew" and "Dirt" are inspected on a white board. By doing so, they can obtain sufficient contrast without affection by the blackboard, so it is possible to detect even thinner pigmented defects. "Tear" is inspected on the blackboard as before.



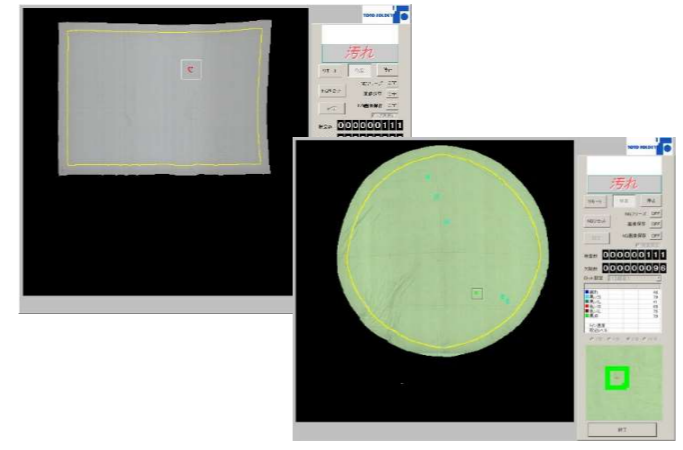
Comparison

	Whiteboard Inspection side	Blackboard Inspection side
Dirt		
Tear		

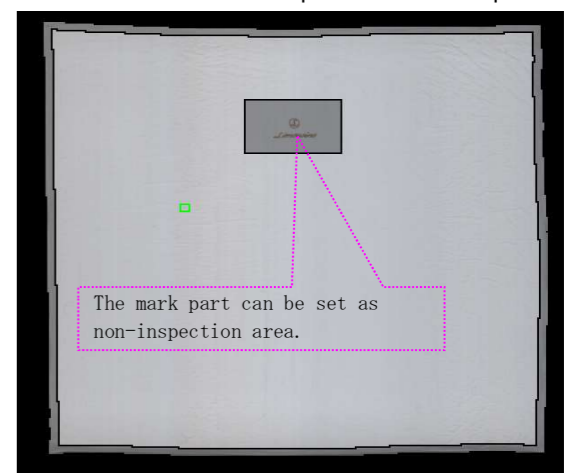
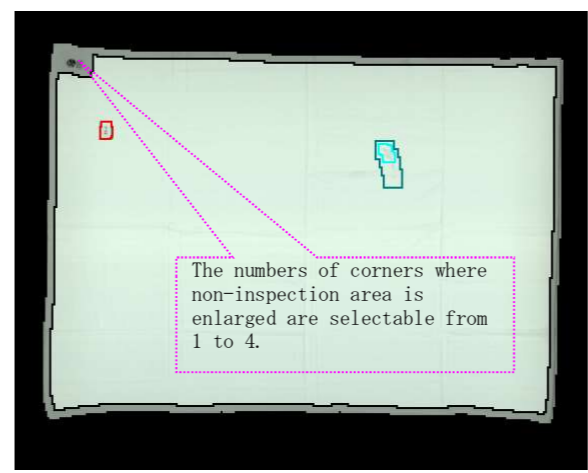
As shown above, dirts are more clear in the whiteboard, tears are more clear in the blackboard.

Functional settings capable to detect or in-detect accurately in any of the desired linen areas

- ◆ **Usual Indetectable Function**
Non-inspection area of VMS-GL-700 series can be set variably in 1 cm units. Not only bed sheets, but also round-shaped table cloths can be inspected.
- ◆ **Stripe sheet Indetectable Function**
Sheet stripe lines are to be set as non-inspection area. Both vertical and horizontal stripes are to be inspected.

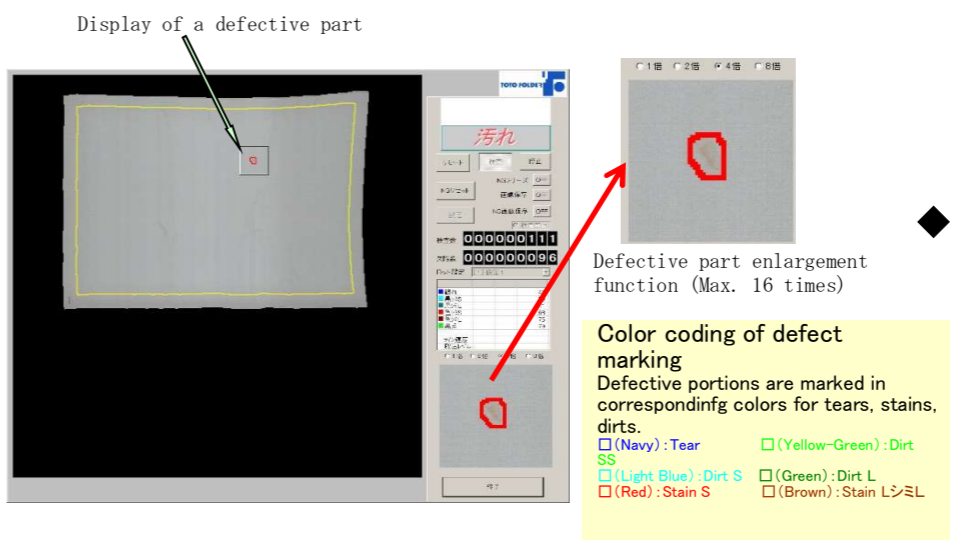


- ◆ **Corner Indetectable Function**
The non-inspection area at the corner with the mark only can be enlarged.
- ◆ **Center Indetectable Function**
Even items with a hotel name or other mark near the center are now possible to be inspected!



17" Color Touch Screen

If a defect is found during inspection, the defective part is indetected on the display. Maximum 16 times enlarged image of the defective part can be displayed.



- ◆ **Simulation Function**
Automatically saves the 5 latest sheet images to PC. Reading the images and setting detection level "Simulation re-inspection function" is possible. Very useful for setting sensitivity.
- ◆ **Operability by Touch Screen**
Touch Screen is used for setting. Only one finger is enough to change settings. Neither keyboard nor mouse is required for setting.

