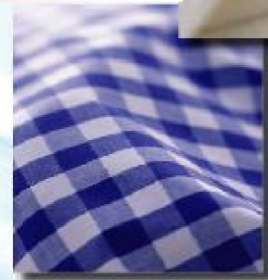
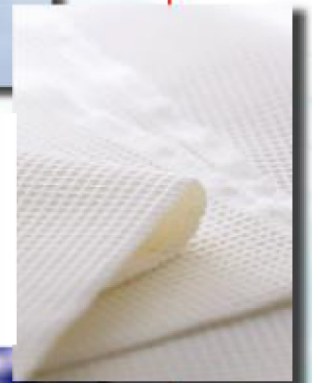
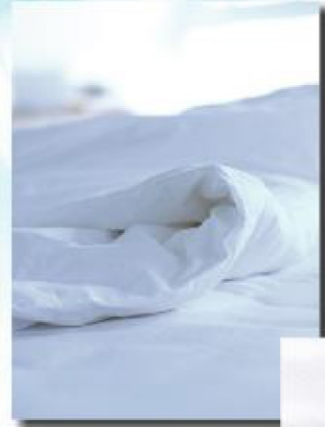


*Sheet Folder with Small Piece Folder / Stacker*

# SS1A-5FP



東都フォルダー工業 株式会社  
TOTO FOLDER MANUFACTURING CO.,LTD.

# Sheet Folder with Small Piece Folder / Stacker

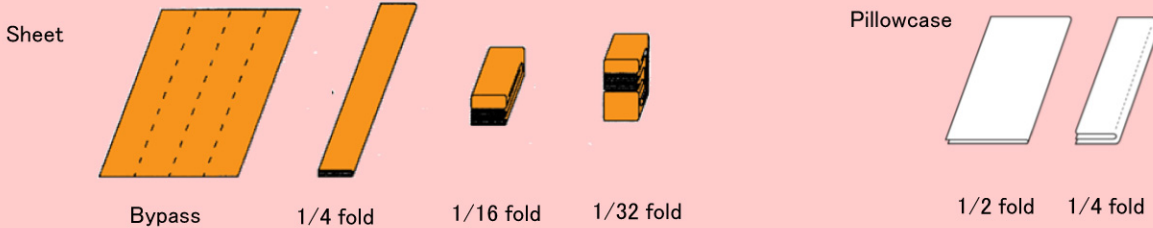
## SS1A-5FP

### Features

- ◆ Folding pattern change can be made just by one touch.
- ◆ Pillowcase folding unit can be automatically separated, ensuring a maintenance space.
- ◆ Sheet folding unit and pillowcase folding unit are separated each other, maximizing the operation of both units without reducing operation capacity.
- ◆ Sheets can be bypassed or folded to 1/4, 1/16 or 1/32 and pillowcases can be folded in 2 or 4.

### Target

- ◆ 1Lane: Sheets to be bypassed or folded to 1/4, 1/16 or 1/32. Max. size: 3,300 x 3,000mm
- ◆ 5 Lanes: Pillowcases to be folded to 1/2 or 1/4. Max. size: (W)500 x (L)1,000mm



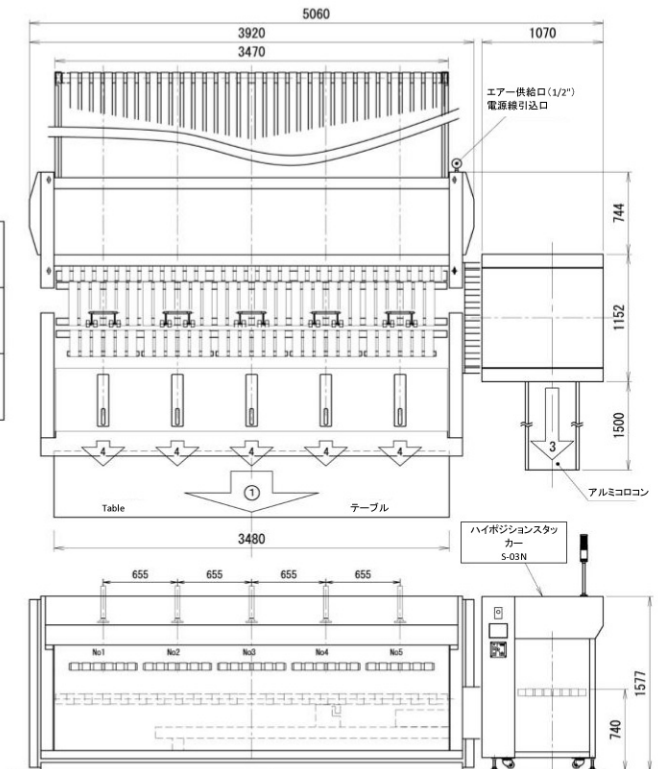
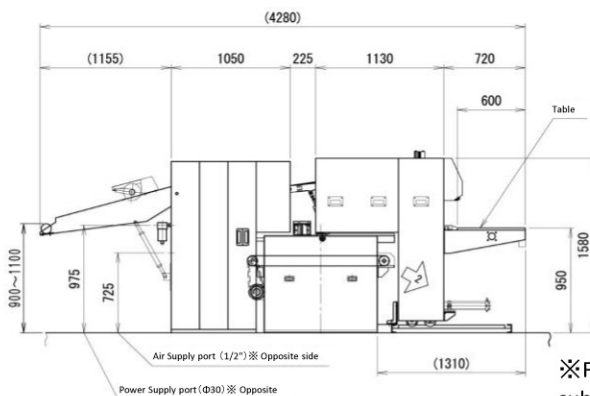
### Specifications

Name	Sheet Folder (Option 1: Pillowcase folder) (Option 2: High Position Stacker)
Model	SS1A-5FP-35 + S-03N
Convey	20~60m/min Pillowcase: 30m/min
Voltage	3Ph AC200V 3.95kW
Air	0.5MPa 300L/min

Folding Patterns	Discharge to
Bypass	Arrow 1
Sheet 1/4 fold	Arrow 2
Sheet 1/16	Arrow 3
Sheet 1/32	
Pillowcase 1/4 fold (5 Lane)	Arrow 4

1 Lane	Sheet 1/4	Max. W3,300 x L2,800mm	
	Sheet 1/16	Max. W1,800 x L2,800mm	
	Sheet 1/32	Max. W3,300 x L2,800mm	
	Conveyor Speed	Max. 60m/	
5 Lanes (Pillowcase)	Pillowcase 1/2 fold	Max. W560 x L1,800mm	
	Pillowcase 1/4 fold	Max. W560 x L1,600	
	Conveyor Speed	Max. 30m/	

Stacking	Sheet 1/16 fold	Stack up to 10 pcs and discharge (Stacking quantity selectable from 1 to 10)	Size of stacked item: Max. W450 x 700mm
	Sheet 1/4 fold Tablecloth 1/4	Discharge without stacking	
Stacking	Pillowcase 1/2 fold	Stack up to 20 pcs and discharge (Stacking quantity selectable from 1 to 20)	Size of stacked item: Max. W560 x 400mm
	Pillowcase 1/4 fold		



※For better performances, specifications, such as shapes and dimensions are subject to change without prior notices.

Toto Folder Manufacturing Co., Ltd. <http://www.totofolder.jp/>

Head Office:

32-24 Maegami-cho, Kawaguchi-shi, Saitama-ken 333-0843 Japan

TEL +81-(0)48-262-2838

Kawagoe Plant:

2-8-75 Yoshino-dai, Kawagoe-shi, Saitama-ken 350-0833 Japan

TEL +81-(0)49-225-6125

Distributor