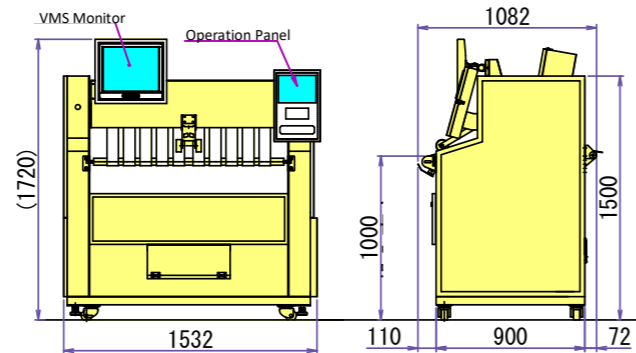


# GT-500W

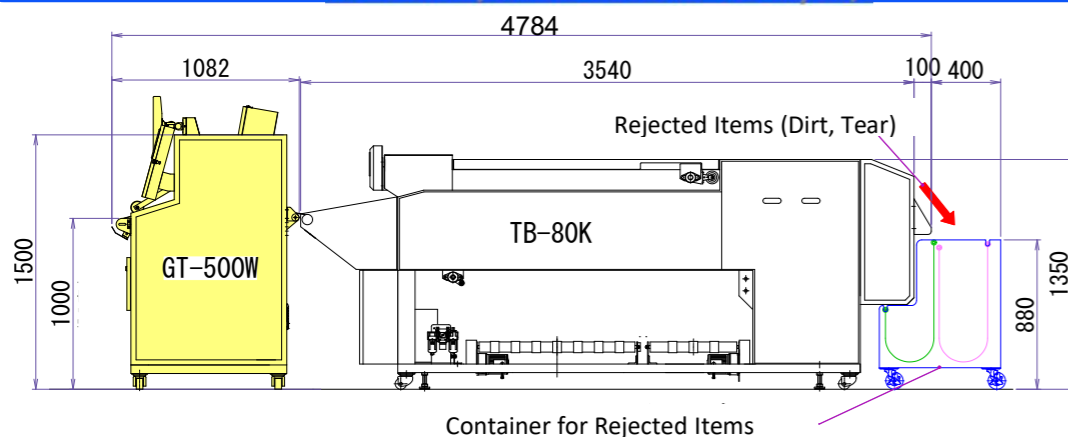
For High Quality Towel Line

## GT-500W Specifications

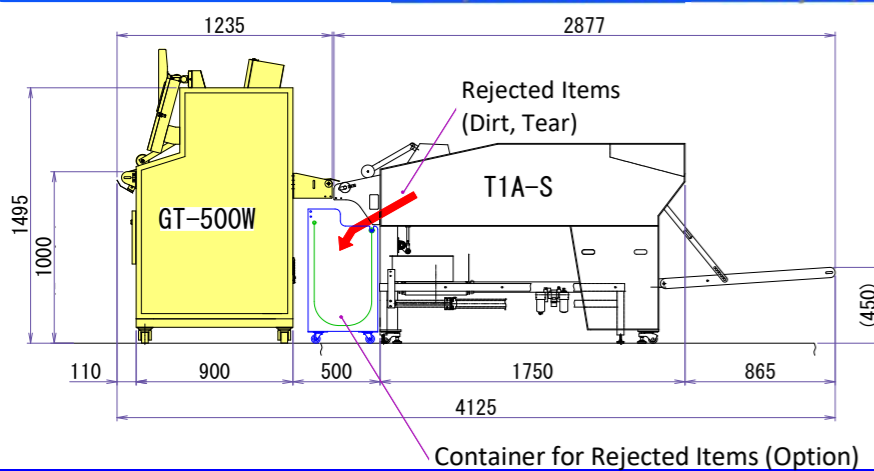
Model	GT-500W	
Measurement	Width	1532mm
	Depth	1082mm
	Height	1500mm
Power Supply	3Ph 200VAC	
Electric Capacity	Machine Unit	0.5[Kw]
	Inspection Unit	2.0[Kw]
	Total	2.5[Kw]
Objects	Max Width: 1000mm Max Length: 2000mm Color: White	



## GT-500W + TB-80K (Installation Example)

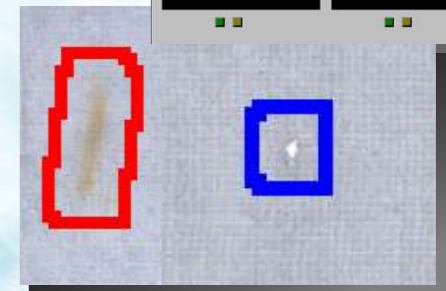
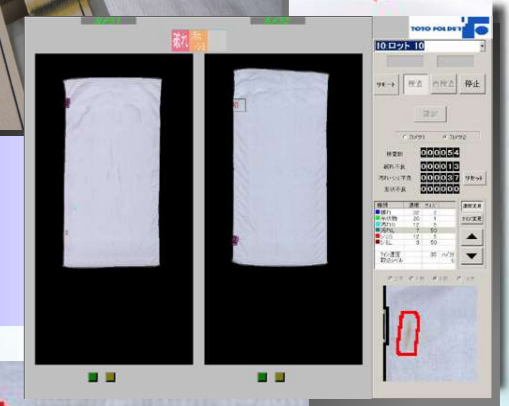
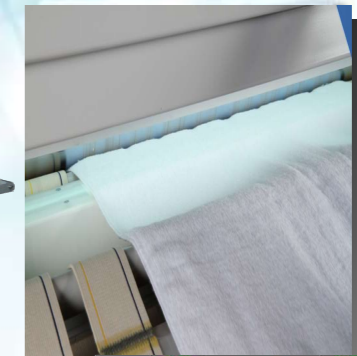


## GT-500W + T1A-S (Installation Example)



Towel Double-sided Inspection Device

# GT-500W



TOTOFOLDER MFG. CO., LTD.

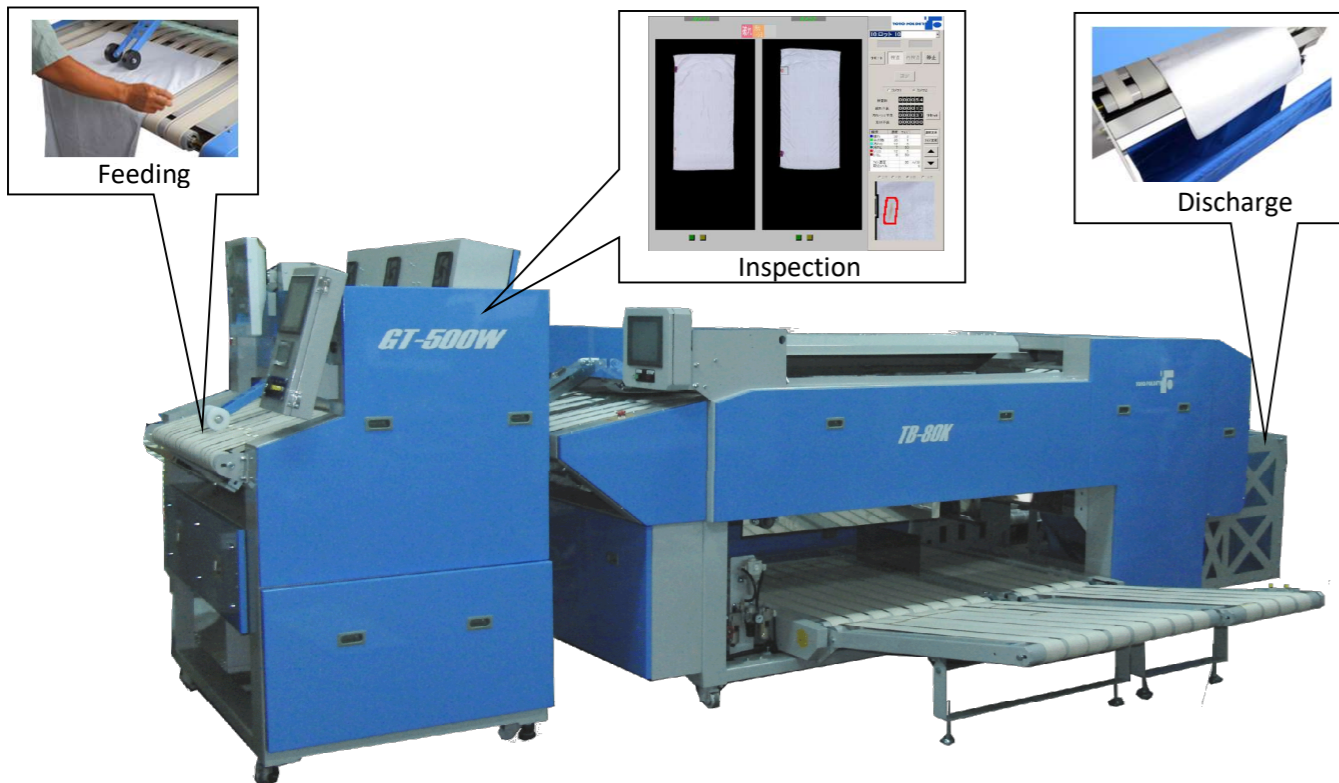
2-8-75 Yoshino-dai, Kawagoe-shi, Saitama-ken 350-0833  
 TEL: +81-(0)49-225-6125 Fax: +81-(0)49-225-6127  
 ◇http://www.totofolder.jp/ ◇tf-main@totofolder.jp

Distributor

# GT-500W

## Connectible with existing TOTO Towel Folder

Connecting with the existing TOTO Towel Folder, you can enjoy inspecting white towels.  
Defected towels will be discharged from the folding machine.  
※Depending upon the Towel Folder model, additional modification works may be required.



GT-500W

Towel Folder (TB-80K)

### Space Saving, Connectible with existing folder

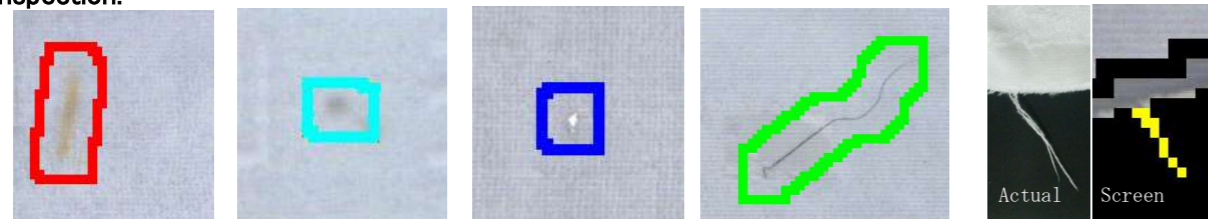
- ★Depth remarkably reduced thanks to small CCD camera
- ★Connectible with existing TOTO Towel Folder  
※Depending upon the towel Folder model, additional modification works may be required.

### High Dust Resistance

- ★Assuming adherence of dusts to lens, a camera is placed in the space of which structure is same as clean rooms. This arrangement prevents erroneous operation by dusts, which enables stable inspection.
- ★"Mirrorless" method which camera directly shoots both front side and back side is adopted.

### Stain(Red, Yellow), Dirt(Black), Tear, Filaments(Hair), Thread Fraying are Detectable

- ※There are some restrictions on the colors and thickness of filaments (hairs, etc.).
- ※Thread fraying is limited to the frayed fibers on the outside of towel at the time of inspection.



Stain(Red, Yellow)

Dirt(Black)

Tear

Filament (Hair, etc.)

Thread Fraying

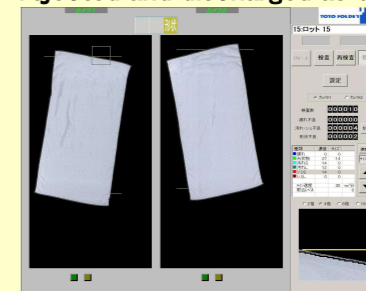
### Backlight method improves inspection accuracy.

Backlight method enables to detect any dirt inside a pile, which is difficult to find unless it is exposed to the light.

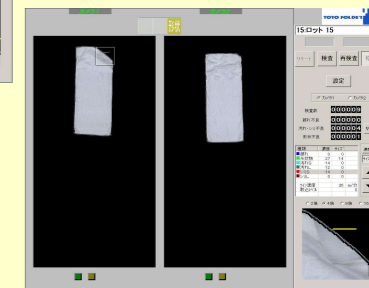


### "Oblique", "Corner bending" due to improper feedings are detected as "Bad shape"

Improper feedings by an operator causes poor foldings. "Oblique", "Corner bending" caused by poor feedings are rejected and discharged as defective.



Oblique



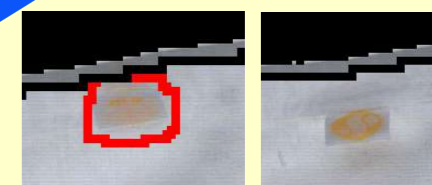
Corner bending

### Available for jacquard patterns (unevenness)

Inspection on jacquard patterns (unevenness) is available. Inspection inside jacquard patterns will be made.

### Tags are automatically recognized and excluded from inspection

Tag sewn on a towel hem are automatically recognized and excluded from the inspection target, no matter where the tag is located either front or back or left or right. (It is not necessary to set the location information in advance.)



Without Tag location setting

With Tag location setting

### 32 inspection programs can be registered. Inspection level can be also set in details and individually.

32 types of inspection programs can be registered, and inspection can be made in the optimum inspection program according to the type. In addition, stain (2 types), dirt (2 types), tears, filaments, density, and sizes can be set respectively. Non-inspection areas can also be set individually with bath towels and hand towels.

Kind	Density	Size	
Tea	32	2	
Filame	27	2	
Dirt	14	8	
Dirt L	12	30	
Stain	14	8	
Stain	4	12	
Line Level		35	m/min. 0

### Embroidery with colored threads can be set as a non-inspection area

Equipped with a "center indetectable function" that excludes arbitrary coordinates from inspection targets, assuming embroidery with colored threads.

### Equipped with a towel wrinkle reduction mechanism

The camera would recognize that there are so many wrinkles on surfaces of towels that have been washed many times because the vertical and horizontal threads will be out of balance and curved. "Wrinkle Reduction Mechanism" that mechanically reduces wrinkles realizes stable inspections.