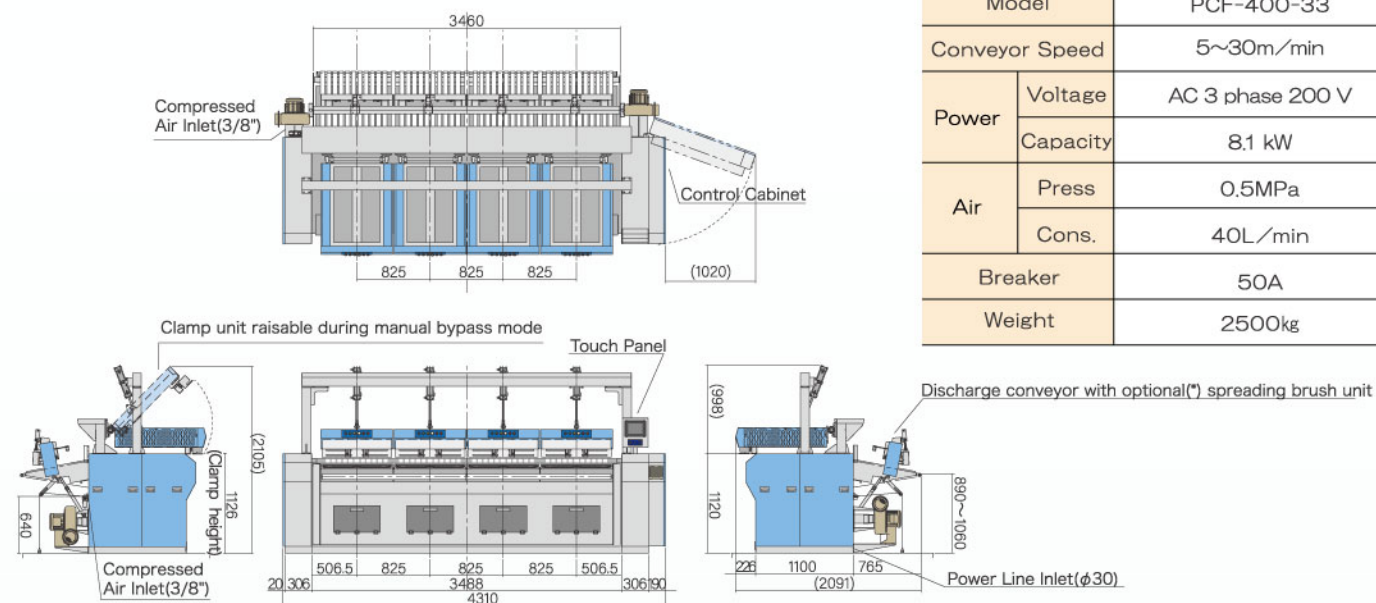


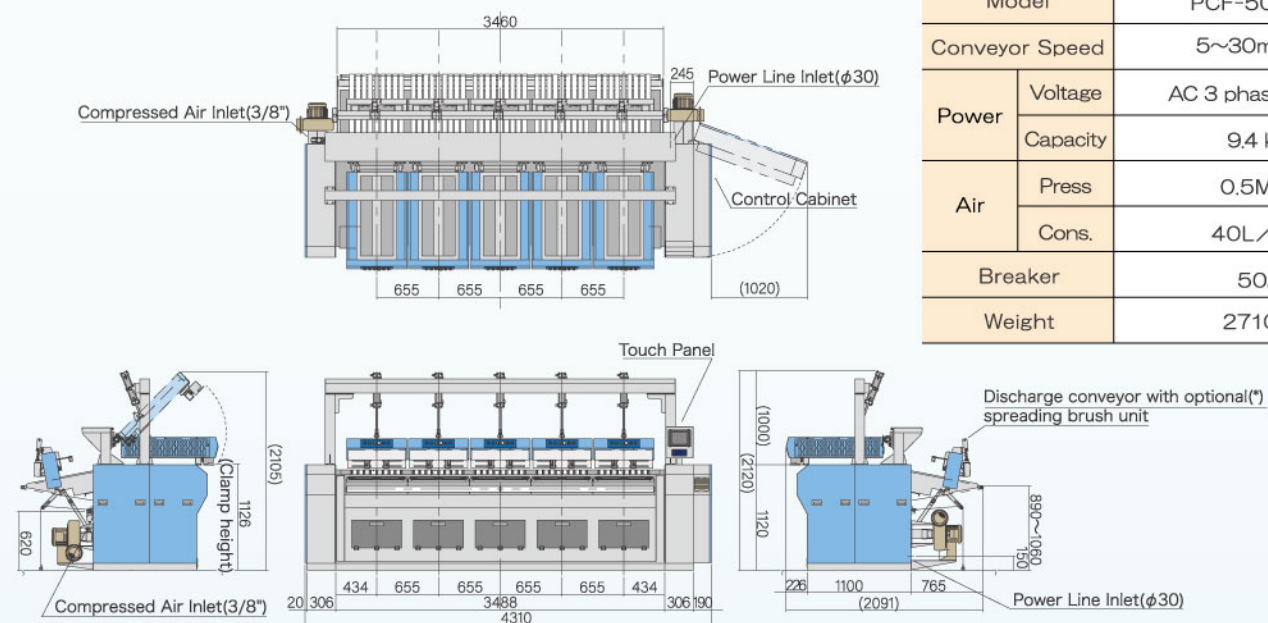
PCF-400-33



■Specification details

Model		PCF-400-33
Conveyor Speed		5~30m/min
Power	Voltage	AC 3 phase 200 V
	Capacity	8.1 kW
Air	Press	0.5MPa
	Cons.	40L/min
Breaker		50A
Weight		2500kg

PCF-500-33



■Specification details

Model		PCF-500-33
Conveyor Speed		5~30m/min
Power	Voltage	AC 3 phase 200 V
	Capacity	9.4 kW
Air	Press	0.5MPa
	Cons.	40L/min
Breaker		50A
Weight		2710kg

A 3500mm width version is also available. Please contact us for more details.

Pillow Case Feeder

PCF-400-33

PCF-500-33

Easy Feeding

Wrinkle Removing

Work Improvement



PCF-400-33 with 4 feeding stations

PCF-500-33 with 5 feeding stations



Easy Feeding

Simple operation : just set on clamp

Simply set on the two clamps (right and left)!
Beginner-friendly operation for easy and safe use.



Variable Clamp Width

The clamp width can be adjusted to accommodate various pillowcase sizes. Each lane can be set independently.

Processing Width

PCF-400	360~720mm
PCF-500	360~550mm

Seated Operation

Allows operation while seated, reducing worker fatigue and providing a comfortable environment for a diverse workforce.



※Processing capability depends on the ironer speed and the length of the linen.
※The processing width is calculated by adding a 30 mm allowance on each side of the clamp width for gripping.

高品質

Complete Wrinkle Removal!

Feeding Section

- 1 Straightening with Spreading Brush!
- 2 Spreading with Expanding Plate!

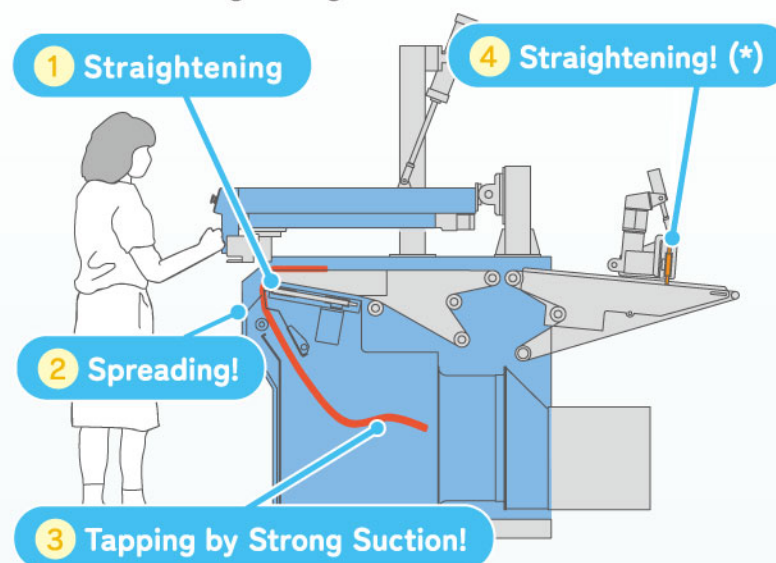
Mid Section

- 3 Tapping by Strong Suction!

Discharge Section

- 4 Straightening with Optional(*) Discharge Conveyor Brush!

With up to four mechanisms at the feeding, mid, and discharge sections, wrinkles are thoroughly smoothed out, eliminating the need for manual wrinkle straightening.



Work Improvement

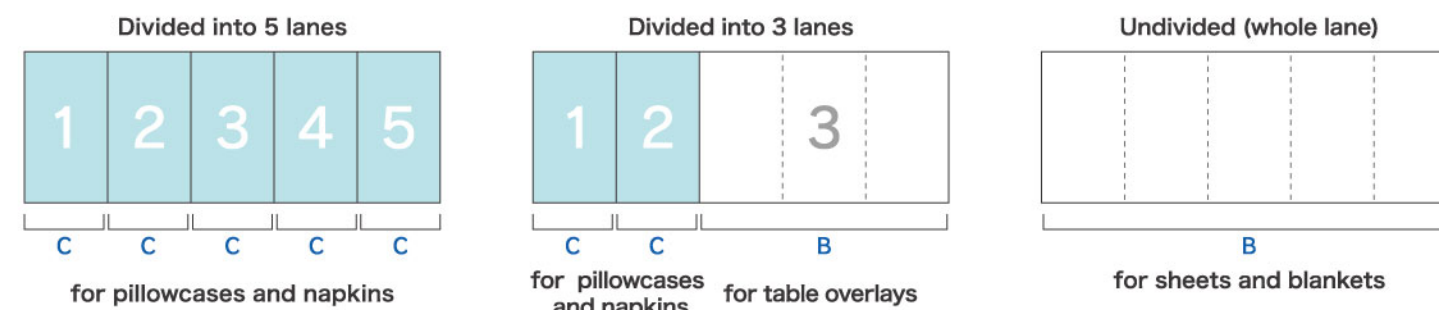
Clamp & Bypass Feeding: Operate Both Together!

Allows separate setting of clamp and manual bypass feeding for each lane. For example, dividing 5 lanes into 3 groups: lanes 1 to 2 use clamp feeding for pillowcases, and lanes 3 to 5 use manual bypass feeding for table overlays. This allows for a variety of usage options.

※Using manual bypass feeding on all lanes disables the suction function (wrinkle removal) and other related functions. ※Depends on the combination with the folders. Please contact us for further details.



PCF-500 Operation Example (C : Clamp Feeding / B : Manual Bypass Feeding)

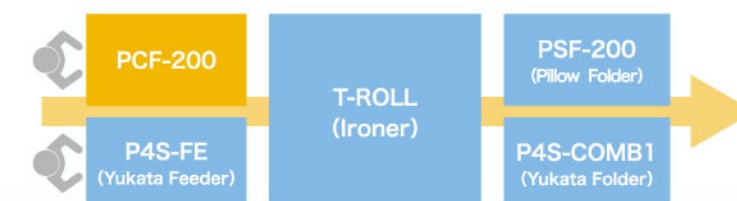


Save Space

PCF-200 for 2 lanes

Enables space-saving and efficient operation with other feeders, folders, ironers, etc.

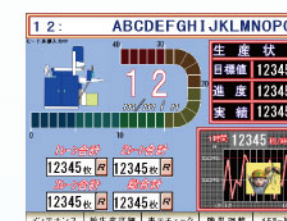
2 Lanes Examples (with Yukata Lane)



Other Function

Obtain Production Data

Save production data to SD card via touch panel operation.



Option

Discharge Conveyor Spreading Brush Unit

Brushing on the discharge conveyor ensures thorough wrinkle removal and improves product quality.



Option

Conveyor System

Conveyor systems located before the feeding section automatically feed pillowcases.



Standard function

- Front Control (Integrated with other TOTO products)
- Synchronized with conveyor speed (5~30 M/min)
- 10inch Touch Panel
Mode registration (up to 30 modes), error display, I/O check, etc.