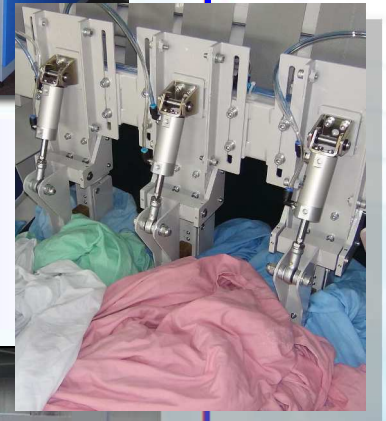


Automatic separating machine for tangled work !

The best partner of spreader feeder !



Sheets quick picker !



QPS



東都フォルダー工業 株式会社
TOTOFOLDER MANUFACTURING CO.,LTD.

Sheets quick picker !

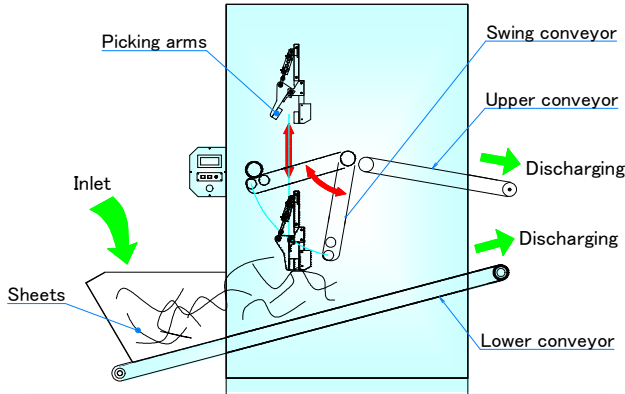
QPS

Feature

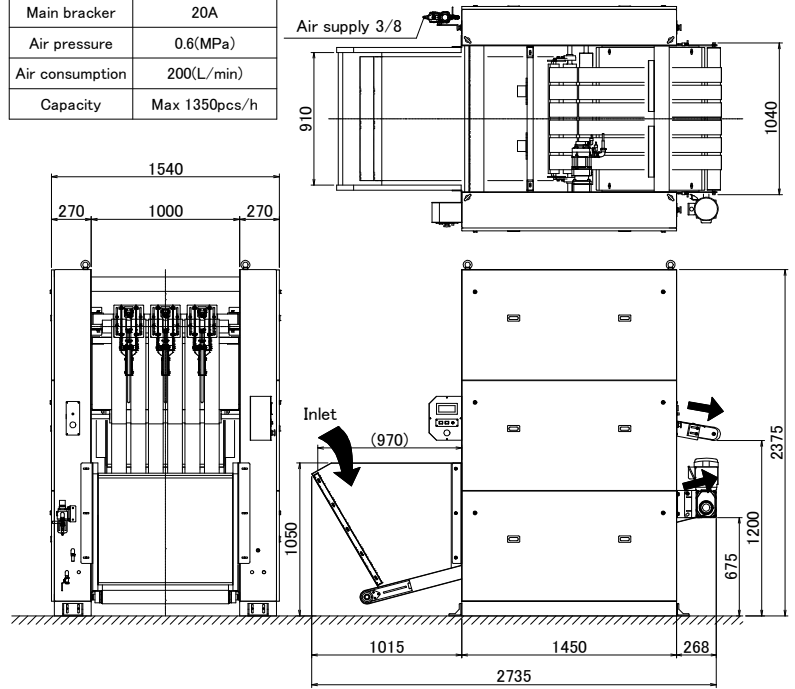
- By automatic separating machine will be able to get laborsaving and stable supply of linen to the feeding section.
- Picking arms are controlled by high performance servo motor control. Picking operation is controlled quickly.
- Space-saving design
- Capacity : 1350Pcs/h

Power	3 x 200(V) 50/60Hz
Electric capacity	3.45(kw)
Main bracker	20A
Air pressure	0.6(MPa)
Air consumption	200(L/min)
Capacity	Max 1350pcs/h

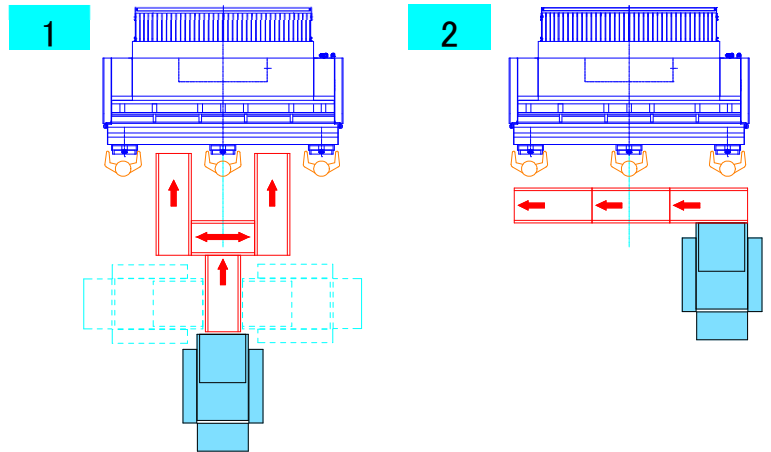
~Outline~



Rubbers are mounted on the tip of picking arms. There is no damage for sheets.

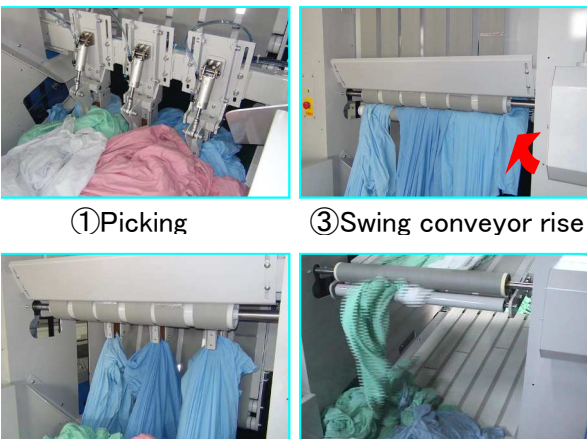


~example of a layout ~



※The conveyor before inlet and after discharging becomes expense separately.

A swing conveyor ensures conveyance of a sheet.



①Picking

③Swing conveyor rise

②Lifting up

④conveyance

TOTO FOLDER MANUFACTURING CO.,LTD.

2-8-75, Yoshino-dai, Kawagoe-shi, Saitama 350-0833 Japan
 Phone: +81-49-225-6125 Fax: +81-49-225-6127
 ◇http://www.totofolder.jp/ ◇tf-main@totofolder.jp

Sales Agent